



Certificate of Analysis

QA SAMPLE - INFORMATIONAL ONLY

1 of 3

ICAL ID: 20240108-019
Sample: CA240108-009-014
240151CC
Strain: 240151CC
Category: Concentrates & Extracts
Type: Cannabinoid Isolate

Stirling Oils
7216 Capulin Crest Dr
Apex, NC 27539

Batch#: 240151CC
Batch Size Collected:
Total Batch Size:
Collected: 01/11/2024; Received: 01/11/2024
Completed: 01/11/2024

Lic. #

Moisture NT Water Activity 0.351 aw	Total THC ND	Total CBD 99.21%	Total Cannabinoids 99.61%	Total Terpenes NT
---	------------------------	----------------------------	-------------------------------------	----------------------

Summary

SOP Used

Date Tested

Batch	POT-PREP-001 High	01/09/2024	Pass
Cannabinoids	WA-PREP-001	01/08/2024	Complete
Water Activity	RS-PREP-001	01/09/2024	Pass - 0.351 aw
Residual Solvents	MICRO-PREP-001	01/10/2024	Pass
Microbials	PESTMICO-LC-PREP-001	01/09/2024	Pass
Mycotoxins	HM-PREP-001	01/08/2024	Pass
Heavy Metals	FM-PREP-001	01/08/2024	Pass
Foreign Matter	PESTMICO-LC-PREP-001/ PEST-GC-PREP-001	01/09/2024	Pass
Pesticides			



Scan to see results

Cannabinoid Profile

Analyte	LOQ (mg/g)	LOD (mg/g)	%	mg/g	Analyte	LOQ (mg/g)	LOD (mg/g)	%	mg/g
THCa	0.5060	0.1271	ND	ND	CBGa	0.5452	0.1817	ND	ND
Δ9-THC	0.5060	0.1408	ND	ND	CBG	0.5390	0.1797	ND	ND
Δ8-THC	0.5060	0.0695	ND	ND	CBN	0.5060	0.1073	ND	ND
THCV	0.5060	0.0582	ND	ND	Total THC			ND	ND
CBDa	0.5060	0.1307	ND	ND	Total CBD			99.21	992.13
CBD	0.5060	0.1121	99.21	992.1	Total			99.61	996.06
CBDV	0.5060	0.0579	0.39	3.9					
CBC	0.6255	0.2085	ND	ND					

Total THC=THCa * 0.877 + d9-THC + d8-THC + d8-THC; Total CBD = CBDa * 0.877 + CBD. LOD= Limit of Detection, LOQ= Limit of Quantitation, ND= Not Detected, NR= Not Reported. Potency is reported on a dry weight basis. Instrumentation and analysis SOPs used: Cannabinoids:UHPLC-DAD(POT-INST-005),Moisture:Moisture Analyzer(MOISTURE-001),Water Activity:Water Activity Meter(WA-INST-002), Foreign Material:Microscope(FOREIGN-001). Density measured at 19-24 °C, Water Activity measured at 0-90% RH. All QA submitted by the client. All CA State Compliance sampled using SAMPL-SOP-001.

Terpene Profile

Analyte	LOQ (mg/g)	LOD (mg/g)	%	mg/g	Analyte	LOQ (mg/g)	LOD (mg/g)	%	mg/g
---------	------------	------------	---	------	---------	------------	------------	---	------

NR= Not Reported (no analysis was performed), ND= Not Detected (the concentration is less than the Limit of Detection (LOD)). Analytical instrumentation used: HS-GC-MS; samples analyzed according to SOP TERP-INST-003.



Infinite Chemical Analysis Labs
8312 Miramar Mall
San Diego, CA
(858) 623-2740
www.infiniteCAL.com
Lic# C8-0000047-LIC

Josh M Swider
Josh Swider
Lab Director, Managing Partner
01/11/2024

Confident LIMS
All Rights Reserved
coa.support@confidentlims.com
(866) 506-5866
www.confidentlims.com



This product has been tested by Infinite Chemical Analysis, LLC using valid testing methodologies and a quality system as required by state law. All LQC samples were performed and met the prescribed acceptance criteria in 16 CCR section 15730, pursuant to 16 CCR section 15726(e)(13). Values reported relate only to the product tested. Infinite Chemical Analysis, LLC makes no claims as to the efficacy, safety or other risks associated with any detected or non-detected levels of any compounds reported herein. This Certificate shall not be reproduced except in full, without the written approval of Infinite Chemical Analysis, LLC.



Certificate of Analysis

QA SAMPLE - INFORMATIONAL ONLY

2 of 3

ICAL ID: 20240108-019
Sample: CA240108-009-014
240151CC
Strain: 240151CC
Category: Concentrates & Extracts
Type: Cannabinoid Isolate

Stirling Oils
7216 Capulin Crest Dr
Apex, NC 27539

Lic. #

Batch#: 240151CC
Batch Size Collected:
Total Batch Size:
Collected: 01/11/2024; Received: 01/11/2024
Completed: 01/11/2024

Residual Solvent Analysis

Category 1	LOQ	LOD	Limit	Status	Category 2	LOQ	LOD	Limit	Status	Category 2	LOQ	LOD	Limit	Status			
	µg/g	µg/g	µg/g	µg/g		µg/g	µg/g	µg/g	µg/g		µg/g	µg/g	µg/g	µg/g			
1,2-Dichloro-Ethane	ND	0.509	0.17	1	Pass	Acetone	ND	51.246	17.082	5000	Pass	n-Hexane	ND	0.2807	0.066	290	Pass
Benzene	ND	0.064	0.021	1	Pass	Acetonitrile	ND	0.359	0.12	410	Pass	Isopropanol	ND	3.8401	1.28	5000	Pass
Chloroform	ND	0.108	0.036	1	Pass	Butane	ND	4.849	0.971	5000	Pass	Methanol	ND	8.917	2.972	3000	Pass
Ethylene Oxide	ND	0.579	0.153	1	Pass	Ethanol	ND	7.843	2.614	5000	Pass	Pentane	189.0	4.271	0.962	5000	Pass
Methylene-Chloride	ND	0.7288	0.127	1	Pass	Ethyl-Acetate	ND	2.288	0.313	5000	Pass	Propane	ND	13.302	4.434	5000	Pass
Trichloroethene	ND	0.145	0.018	1	Pass	Ethyl-Ether	ND	3.548	1.183	5000	Pass	Toluene	ND	0.864	0.088	890	Pass
						Heptane	ND	2.859	0.687	5000	Pass	Xylenes	ND	2.572	0.216	2170	Pass

NR= Not Reported (no analysis was performed), ND= Not Detected (the concentration is less than the Limit of Detection (LOD)). Analytical instrumentation used: HS-GC-MS; samples analyzed according to SOP RS-INST-003.

Heavy Metal Screening

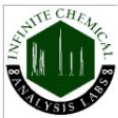
	LOQ	LOD	Limit	Status	
	µg/g	µg/g	µg/g	µg/g	
Arsenic	ND	0.009	0.003	0.2	Pass
Cadmium	ND	0.002	0.001	0.2	Pass
Lead	ND	0.004	0.001	0.5	Pass
Mercury	ND	0.014	0.005	0.1	Pass

NR= Not Reported (no analysis was performed), ND= Not Detected (the concentration is less than the Limit of Detection (LOD)). Analytical instrumentation used: ICP-MS; samples analyzed according to SOP HM-INST-003.

Microbiological Screening

	Limit	Result	Status
	CFU/g	CFU/g	
Aspergillus flavus		NR	NT
Aspergillus fumigatus		NR	NT
Aspergillus niger		NR	NT
Aspergillus terreus		NR	NT
STEC		Not Detected	Pass
Salmonella SPP		Not Detected	Pass

ND=Not Detected. Analytical instrumentation used:qPCR; samples analyzed according to SOP MICRO-INST-001.



Infinite Chemical Analysis Labs
8312 Miramar Mall
San Diego, CA
(858) 623-2740
www.infiniteCAL.com
Lic# C8-0000047-LIC

Josh M Swider
Josh Swider
Lab Director, Managing Partner
01/11/2024

Confident LIMS
All Rights Reserved
coa.support@confidentlims.com
(866) 506-5866
www.confidentlims.com



This product has been tested by Infinite Chemical Analysis, LLC using valid testing methodologies and a quality system as required by state law. All LQC samples were performed and met the prescribed acceptance criteria in 16 CCR section 15730, pursuant to 16 CCR section 15726(e)(13). Values reported relate only to the product tested. Infinite Chemical Analysis, LLC makes no claims as to the efficacy, safety or other risks associated with any detected or non-detected levels of any compounds reported herein. This Certificate shall not be reproduced except in full, without the written approval of Infinite Chemical Analysis, LLC.



Certificate of Analysis

QA SAMPLE - INFORMATIONAL ONLY

3 of 3

ICAL ID: 20240108-019
Sample: CA240108-009-014
240151CC
Strain: 240151CC
Category: Concentrates & Extracts
Type: Cannabinoid Isolate

Stirling Oils
7216 Capulin Crest Dr
Apex, NC 27539

Batch#: 240151CC
Batch Size Collected:
Total Batch Size:
Collected: 01/11/2024; Received: 01/11/2024
Completed: 01/11/2024

Lic. #

Chemical Residue Screening

Category 1	LOQ	LOD	Status	Mycotoxins	LOQ	LOD	Limit	Status		
	µg/g	µg/g	µg/g		µg/kg	µg/kg	µg/kg	µg/kg		
Aldicarb	ND	0.030	0.008	Pass	B1	ND	8.98	2.96	Tested	
Carbofuran	ND	0.030	0.005	Pass	B2	ND	10.17	3.36	Tested	
Chlordane	ND	0.075	0.025	Pass	G1	ND	5.25	1.73	Tested	
Chlorfenapyr	ND	0.075	0.025	Pass	G2	ND	6.26	2.07	Tested	
Chlorpyrifos	ND	0.046	0.015	Pass	Ochratoxin A	ND	13.37	4.41	20	Pass
Coumaphos	ND	0.030	0.004	Pass	Total Aflatoxins	ND			20	Pass
Daminozide	ND	0.053	0.018	Pass						
Dichlorvos	ND	0.055	0.018	Pass						
Dimethoate	ND	0.030	0.006	Pass						
Ethoprophos	ND	0.030	0.006	Pass						
Etofenprox	ND	0.030	0.004	Pass						
Fenoxycarb	ND	0.030	0.004	Pass						
Fipronil	ND	0.050	0.017	Pass						
Imazalil	ND	0.030	0.009	Pass						
Methiocarb	ND	0.030	0.002	Pass						
Mevinphos	ND	0.030	0.008	Pass						
Paclbutrazol	ND	0.030	0.009	Pass						
Parathion Methyl	ND	0.024	0.008	Pass						
Propoxur	ND	0.030	0.008	Pass						
Spiroxamine	ND	0.030	0.006	Pass						
Thiacloprid	ND	0.030	0.005	Pass						

Category 2	LOQ	LOD	Limit	Status	Category 2	LOQ	LOD	Limit	Status		
	µg/g	µg/g	µg/g	µg/g		µg/g	µg/g	µg/g	µg/g		
Abamectin	ND	0.099	0.033	0.1	Pass	Kresoxim Methyl	ND	0.030	0.007	0.1	Pass
Acephate	ND	0.030	0.007	0.1	Pass	Malathion	ND	0.030	0.003	0.5	Pass
Acequinocyl	ND	0.046	0.015	0.1	Pass	Metalaxyl	ND	0.030	0.005	2	Pass
Acetamiprid	ND	0.030	0.005	0.1	Pass	Methomyl	ND	0.030	0.009	1	Pass
Azoxystrobin	ND	0.030	0.005	0.1	Pass	Myclobutanil	ND	0.030	0.007	0.1	Pass
Bifenazate	ND	0.030	0.007	0.1	Pass	Naled	ND	0.030	0.008	0.1	Pass
Bifenthrin	ND	0.030	0.004	3	Pass	Oxamyl	ND	0.030	0.007	0.5	Pass
Boscalid	ND	0.030	0.008	0.1	Pass	Pentachloronitrobenzene	ND	0.054	0.018	0.1	Pass
Captan	ND	0.358	0.120	0.7	Pass	Permethrin	ND	0.030	0.002	0.5	Pass
Carbaryl	ND	0.030	0.006	0.5	Pass	Phosmet	ND	0.030	0.005	0.1	Pass
Chlorantraniliprole	ND	0.030	0.009	10	Pass	Piperonyl Butoxide	ND	0.030	0.003	3	Pass
Clofentezine	ND	0.030	0.002	0.1	Pass	Prallethrin	ND	0.071	0.023	0.1	Pass
Cyfluthrin	ND	0.056	0.019	2	Pass	Propiconazole	ND	0.030	0.009	0.1	Pass
Cypermethrin	ND	0.181	0.060	1	Pass	Pyrethrins	ND	0.030	0.003	0.5	Pass
Diazinon	ND	0.030	0.005	0.1	Pass	Pyridaben	ND	0.030	0.002	0.1	Pass
Dimethomorph	ND	0.030	0.005	2	Pass	Spinetoram	ND	0.030	0.001	0.1	Pass
Etoxazole	ND	0.030	0.004	0.1	Pass	Spinosad	ND	0.030	0.001	0.1	Pass
Fenhexamid	ND	0.034	0.011	0.1	Pass	Spiromesifen	ND	0.030	0.009	0.1	Pass
Fenpyroximate	ND	0.030	0.004	0.1	Pass	Spirotetramat	ND	0.030	0.008	0.1	Pass
Fonicamid	ND	0.035	0.012	0.1	Pass	Tebuconazole	ND	0.030	0.006	0.1	Pass
Fludioxonil	ND	0.036	0.012	0.1	Pass	Thiamethoxam	ND	0.030	0.008	5	Pass
Hexythiazox	ND	0.030	0.001	0.1	Pass	Trifloxystrobin	ND	0.030	0.003	0.1	Pass
Imidacloprid	ND	0.033	0.011	5	Pass						

Other Analyte(s):

NR= Not Reported (no analysis was performed), ND= Not Detected (the concentration is less than the Limit of Detection (LOD)). Analytical instrumentation used: LC-MS-MS & GC-MS-MS; samples analyzed according to SOPs PESTMYCO-LC-INST-004 and PEST-GC-INST-003.



Infinite Chemical Analysis Labs
8312 Miramar Mall
San Diego, CA
(858) 623-2740
www.infiniteCAL.com
Lic# C8-0000047-LIC

Josh M Swider

Josh Swider
Lab Director, Managing Partner
01/11/2024

Confident LIMS
All Rights Reserved
coa.support@confidentlims.com
(866) 506-5866
www.confidentlims.com



This product has been tested by Infinite Chemical Analysis, LLC using valid testing methodologies and a quality system as required by state law. All LQC samples were performed and met the prescribed acceptance criteria in 16 CCR section 15730, pursuant to 16 CCR section 15726(e)(13). Values reported relate only to the product tested. Infinite Chemical Analysis, LLC makes no claims as to the efficacy, safety or other risks associated with any detected or non-detected levels of any compounds reported herein. This Certificate shall not be reproduced except in full, without the written approval of Infinite Chemical Analysis, LLC.



Lavender Lotion 2500mg CBD

Issue Date 12/6/2023
Revision Date 12/6/2023

Ref. 20231206

This SDS adheres to the standards and regulatory requirements of the United States and may not meet the regulatory requirements in other countries.

SECTION 1. PRODUCT AND COMPANY IDENTIFICATION

Product Name	Lavender Lotion 2500mg CBD
Product Use	Personal Care
Restrictions for use	See Section 16
Manufacturer/Supplier	Stirling Oils 2500 Regency Parkway Suite 283 Cary, NC 27518 USA
Product Information	800-201-2840 X2
Product Ingredients	Organic Aloe Leaf Juice, Organic Shea Butter, Emulsifying Wax, Organic Jojoba Seed Oil, Organic Lavender Flower Water, Mango Seed Butter, Vitamin E, Sunflower Seed Oil, Organic Evening Primrose Oil, Lavender Flower Oil, Witch Hazel Water, Organic White Willow Bark Extract, Stearic Acid, Organic Rosemary Leaf Extract, Organic Neem Seed Oil, Xanthan Gum, and Pure CBD Isolate.
Product Variation	Lavender
Product formula	2500mg CBD

SECTION 2. HAZARDS IDENTIFICATION**GHS-US Labeling**

Skin Sens. 1	H317 May cause an allergic skin reaction
Eye Irrit. 2A	H320 Causes serious eye irritation
Precautionary Statements (GHS-US)	<p>P305+P351+P338 -If in eyes: Rinse cautiously with water for several minutes. Remove contact lenses if present and easy to do - continue rinsing.</p> <p>P337+P313 - If eye irritation persists: Get medical advice/attention.</p> <p>P333+P317 – if skin irritation or rash occurs. Get medical help.</p> <p>P264 - Wash hands thoroughly after handling.</p> <p>P333+P317 – if skin irritation or rash occurs. Get medical help.</p>

Other Hazards

Exposure may aggravate pre-existing eye, skin, or respiratory conditions.

SECTION 3. COMPOSITION/INFORMATION ON INGREDIENTS

This product does not contain components that require disclosure according to OSHA Communication Standard 2012.

SECTION 4. FIRST AID MEASURES

General advice	Never give anything by mouth to an unconscious person. If you feel unwell, seek medical advice (show the label where possible).
Inhalation	When symptoms occur: go into open air and ventilate suspected area. Obtain medical attention if breathing difficulty persists.
Skin contact	If reaction occurs rinse with mild soap and plenty of water. Obtain medical attention if irritation develops or persists.
Eye contact	Remove contact lenses, if present and easy to do. Rinse cautiously with water for at least 15 minutes. Obtain medical attention if irritation develop or persists.

Ingestion	Rinse mouth. Do NOT induce vomiting. Obtain medical attention.
Most important symptoms/ effects, acute & delayed	May cause sensitization in susceptible persons.
Symptoms/Injuries After Inhalation	Prolonged exposure may cause irritation.
Symptoms/Injuries After Skin Contact	Prolonged contact may cause irritation. May cause an allergic skin reaction.

SECTION 5. FIREFIGHTING MEASURES

Suitable extinguishing media	Water, Foam, Dry Chemical, Carbon Dioxide (CO2)
Unsuitable extinguishing Media	No applicable data available.
Specific hazards	Exposure to decomposition products may be hazardous to health.
Special protective	Standard approved fire fighting equipment. No additional breathing apparatus or protective required.
Further information	Evacuate personnel to safe areas. Evacuate personnel and keep upwind of fire.

SECTION 6. ACCIDENTAL RELEASE MEASURES

NOTE: Review FIRE FIGHTING MEASURES and HANDLING (PERSONNEL) sections before proceeding with clean-up. Use appropriate PERSONAL PROTECTIVE EQUIPMENT during clean-up.

Personal Precautions, Protective Equipment and Emergency Procedures	Do not get in eyes. Avoid breathing vapors.
Safeguards (Personnel)	Equip cleanup crew with proper protection.
Environmental Precautions	Ventilate area. Prevent entry to sewers and public waters.

Spill clean-up	Contain spillage, sweep up and transfer to a container for disposal according to local/national regulations Clean up spills immediately and dispose of waste safely. Contain any spills with dikes or absorbents to prevent migration. (see section 13).
Accidental release measure	No applicable data available.

SECTION 7. EXPOSURE CONTROLS/PERSONAL PROTECTION

Handling (Personnel)	Wash hands and other exposed areas with mild soap and water before eating, drinking or smoking and when leaving work. Avoid contact with eyes.
Hygiene Measures	Handle in accordance with good industrial hygiene and safety procedures.
Storage	Store in a cool, dry place. Keep container closed to prevent contamination. Protect from exposure to light.
Storage period	No applicable data available.
Storage temperature Maximum temperature	No applicable data available. 30° C (86° F)

SECTION 8. EXPOSURE CONTROLS/PERSONAL PROTECTION

Control Parameters

For substances listed in section 3 that are not listed here, there are no established exposure limits from the manufacturer, supplier, importer, or the appropriate advisory agency including: ACGIH (TLV), AIHA (WEEL), NIOSH (REL), or OSHA (PEL).

Appropriate Engineering Controls

Suitable eye/body wash equipment should be available in the vicinity of any potential exposure. Ensure adequate ventilation, especially in confined areas. Ensure all national/local regulations are observed.

Personal Protective Equipment

Gloves. Protective clothing. Protective goggles

Materials for Protective Clothing	Chemically resistant materials and fabrics.
Hand Protection	Wear protective gloves.
Eye and Face Protection	Chemical safety goggles.
Skin and Body Protection	Wear suitable protective clothing.
Respiratory Protection	If exposure limits are exceeded or irritation is experienced, approved respiratory protection should be worn. In case of inadequate ventilation, oxygen deficient atmosphere, or where exposure levels are not known wear approved respiratory protection.

SECTION 9. PHYSICAL AND CHEMICAL PROPERTIES

Physical state	Creme
Appearance	Off White
Odor	Lavender
Odor threshold	No applicable data available.
pH	4.7 - 5.6
Melting point	No applicable data available
Melting point/ Freezing point	No applicable data available
Boiling point	No applicable data available
Flash point	No applicable data available
Evaporation rate	No applicable data available.
Flammability (solid/gas)	No applicable data available.

Upper explosion limit	No applicable data available.
Viscosity	4500-7200cPs (Brookfield@25.1°C)
Lower explosion limit	No applicable data available
Vapor pressure	No applicable data available
Vapor density	No applicable data available.
Specific gravity (relative density)	No applicable data available.
Water solubility	No applicable data available.
Solubility(ies)	No applicable data available.
Partition coefficient: n-octanol/water	No applicable data available.
Auto-ignition temperature	No applicable data available..
Decomposition temperature	No applicable data available

SECTION 10. STABILITY AND REACTIVITY

Reactivity	Hazardous reactions will not occur under normal conditions.
Chemical stability	Stable at normal temperatures and storage conditions.
Possibility of hazardous	Hazardous polymerization will not occur.
Conditions to avoid	Temperature > 129°C (>264°F)
Incompatible materials	Strong acids and oxidizing agents.
Hazardous decomposition products	No decomposition if stored normally.

SECTION 11. TOXICOLOGICAL INFORMATION

Acute Toxicity	Not classified
Skin Corrosion/Irritation	Not classified
Serious Eye Damage/Irritation	Causes serious eye irritation
Respiratory or Skin Sensitization	May cause an allergic skin reaction.
Germ Cell Mutagenicity	Not classified
Carcinogenicity	Not classified
Reproductive Toxicity	Not classified
Specific Target Organ Toxicity (Single Exposure)	Not classified
Specific Target Organ Toxicity (Repeated Exposure)	Not classified
Aspiration Hazard	Not classified
Symptoms/Injuries After Inhalation	Prolonged exposure may cause irritation.
Symptoms/Injuries After Skin Contact	Prolonged contact may cause irritation. May cause an allergic skin reaction.
Symptoms/Injuries After Eye Contact	Causes serious eye irritation. Stinging, tearing, redness, swelling, and/or blurred vision.
Symptoms/Injuries After Ingestion	Ingestion may cause adverse effects.
Chronic Symptoms	None expected under normal conditions of use.

SECTION 12. ECOLOGICAL INFORMATION

Additional ecological Information	No data is available on the product itself.
Persistence and Degradability	Not established.
Bioaccumulative Potential	Not established.

Mobility in Soil	No additional information available
Other Adverse Effects	Avoid release to the environment. Large or frequent spills can have a harmful or damaging effect on the environment.

SECTION 13. DISPOSAL CONSIDERATIONS

Waste disposal methods- Product	Treatment, storage, transportation, and disposal must be in accordance with applicable federal, state/provincial, and local regulations
Ecology - Waste Materials	Avoid release to the environment.

SECTION 14. TRANSPORT INFORMATION

The shipping description(s) stated herein were prepared in accordance with certain assumptions at the time the SDS was authored, and can vary based on a number of variables that may or may not have been known at the time the SDS was issued.

In Accordance with DOT	Not regulated as a hazardous material
In Accordance with IMDG	Not regulated as a dangerous good
In Accordance with IATA	Not regulated as a dangerous good

SECTION 15. REGULATORY INFORMATION

TSAC	All chemical substances in this product are listed on the United States TSCA (Toxic Substances Control Act) inventory or are otherwise exempt from inventory status.
Other Federal Requirements	This product complies with the appropriate sections of the Food and Drug Administration, Code of Federal Regulations (CFR) Title 21.
SARA 313 Regulated Chemical(s)	This material does not contain any chemical compounds with known CAS numbers that exceed the threshold (De Minimis) reporting levels established by SARA Title III, Section 313

California Prop. 65

This product can expose you to chemicals including DIETHANOLAMINE, BETA-MYRCENE, ESTRAGOLE, METHYL EUGENOL which is/are known to the State of California to cause cancer. For more information go to www.P65Warnings.ca.gov.

California Cosmetic Fragrance and Flavor Ingredient Right to Know Act-Reportable Ingredient List*
Limonene CAS No.: 5989-27-5
Citral CAS No.: 5392-40-5
Linalool CAS No.: 78-70-6
Geraniol CAS No.: 106-24-1

SECTION 16. OTHER INFORMATION

The information provided in this Safety Data Sheet is correct to the best of our knowledge, information, and belief at the date of its publication. This information given is designed only as a guidance for safe handling, use, processing, storage, transportation, disposal, and release and is not to be considered a warranty of quality specification. The information related only to the specific material designated and may not be valid for such material used in combination with any other material or in any process, unless specified in the text.